



City College
Peterborough
Working together, learning together
Jean Hunt Building



City College
Peterborough
Working together, learning together
John Mansfield Campus



YOUR CHOICES

2023/24

16 – 19+ Course Guide



Find the perfect course for you.

citycollegepeterborough.ac.uk



Welcome

to City College Peterborough

City College Peterborough offers a wide range of programmes to help you achieve the right skills and qualifications needed for your next steps in life.

You will study with our knowledgeable, experienced and friendly staff in our dynamic and purpose-built facilities and we are always updating our courses to ensure that we deliver relevant training that supports and meets the needs of our local and national economy. We pride ourselves on our dedicated staff delivering high-quality teaching, learning, and assessment that supports our learners. As well as studying towards a qualification, you will have the chance to gain some valuable work experience and transferable skills development.

Joining City College Peterborough will offer you the opportunity to socialise with new people, build new friendships and learn at the same time. Our dedicated Wellbeing team are on hand to signpost our learners to sustainable choices that promote a healthy lifestyle.

You will be treated with dignity and respect in a friendly and supportive environment, which will help you to achieve your goals. All we expect from you is enthusiasm and commitment to your chosen programme. Welcome to City College Peterborough!

Tasha Dalton-Winterton BEM
Principal John Mansfield Campus/Day Opportunities provision



Scan here for further information.

www.youtube.com/watch?v=KGQOIhNn28k

How to contact us

Contact our Information, Advice and Guidance trained Recruitment Advisors to help you choose the right course that suits you. The recruitment team will be more than happy to help.

You can contact us at
sprecruitment@citycollegepeterborough.ac.uk
or **01733 761361** www.citycollegepeterborough.ac.uk

Location maps can be found on the inside back cover of this guide.



Find out more by scanning here to visit our YouTube channel.



Why should you study with us?

Amazing facilities and equipment

We have industry standard facilities including a motor vehicle workshop, a hairdressing salon, purpose built business enterprise space, catering kitchens, health and wellbeing centre and outdoor gym. These are all kitted out with the necessary resources to enable your learning.

Social environment

Meet new people and make life-long friends. Take part in college trips and extra curricular activities.

Central location

We have two campuses based in central Peterborough. One in the city centre and the second in Dogsthorpe. Both campuses have free car parking and bus stops outside the buildings.

A supportive, fun learning environment

Learners are treated like adults and your decision making is promoted.

A better future

Our courses are designed to help you achieve nationally recognised qualifications and experience in both theory and practice. Whether your destination is the world of work or higher/further education, our courses will ensure you are fully prepared for your future.

Please contact our Recruitment Team on:

01733 761361 or

sprecruitment@citycollegepeterborough.ac.uk

Open Events

Look out for our open events that run throughout the year. Dates and times are published on the college website and our facebook page. Come along to meet our tutors and see our facilities.

You don't have to wait until these dates, to take a look at what City College Peterborough has to offer! Contact our Recruitment Team to arrange a visit.

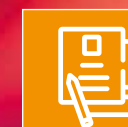
Staying in education after 16

Young people in England must stay in education until they are 18. This does not mean young people have to stay at school!

You can enrol onto any of the following:

- full-time education (e.g. at a school or college)
- an apprenticeship or traineeship
- part-time education or training combined with one of the following:
 - employment or self-employment for a minimum 20 hours per week
 - volunteering for a minimum 20 hours per week.

Here at City College Peterborough we can offer any of the above.



Learner story

I have been attending Introduction to the Hospitality Industry. I have thoroughly enjoyed the course, I have learned so many new things and new skill which will help me be more independent and get a job in the industry.

Jamie Smith

Student Support

Support for Learners with Learning Difficulties or Disabilities

The College has a dedicated team of SEND Progress Coaches lead by the Senior SEND Officer who all work to ensure your needs are being met within the class environment as well as being available to parents/guardians to offer support and guidance. The SEND team are also on hand to ensure your young persons Education Health and Care Plan is reviewed and updated to best reflect the needs of the learner as well as to support in building a suitable pathway into adulthood.

We offer a wide range of facilities to aid your support, including a purpose-built unit, designed to provide the practical applications of your learning. This includes a sensory room, particularly beneficial if you need a space to process your thoughts and moods.

The team are highly trained to assist with any support needs that may arise and ensure that your learning is individual to you.

The aim of Preparing for Adulthood is to help you gain transferable skills needed to be able to have fulfilling lives. Learning life skills to achieve independence, it is an important part of the journey into adulthood.

We offer preparation and guidance that you can develop and apply in the real world the essential skills required in independent living.



Scan here for further information about the Preparing for Adulthood Course.



Wellbeing Support

Here at City College Peterborough we have a dedicated Wellbeing Team. The staff are here to ensure that you are given the support you need in order to be able to overcome any barriers that are holding you back from achieving and progressing onto your next steps in education, employment or training.

The team are dedicated to ensuring your safety and work in close partnership with teachers, parents/carers and local and national agencies such as the Targeted Youth Support Service within the local authority. Together they can assist you with anything from housing and benefits advice to counselling services if needed.

The Wellbeing Team can help with:

- Emotional Support (counselling and anger management)
- Mediation with friends
- Referral to external support services.

Our Wellbeing Officers offer help with both your academic choices, funding and money issues and any additional needs you may have. You will be allocated a Wellbeing Officer who will also liaise with relevant professionals to assist in your transition to independence. We offer training in various aspects of daily life, such as using public transport, supporting a healthy lifestyle, managing money and improving interpersonal skills.



Student Support



Equality & Diversity

The College believes that education is a right for all and will actively work towards offering equality of access and opportunity to all learners.



Safeguarding

City College Peterborough are committed to promoting the welfare, safety and protection of all children, vulnerable adults, learners and staff.

Prevent

Prevent is a government strategy to stop people becoming terrorists or supporting terrorist or extremist causes. If you think someone is being exploited you can raise your concern with any of the nominated safeguarding contacts that are displayed on a board close to the College's reception or you can speak to your tutor or any person where a Bee Safe symbol is displayed and they will help you.



British Values

In the United Kingdom society is held together by Fundamental British Values.

Democracy – Your right to vote for policies where your opinion counts.

The rule of law – Nobody is above the law which is there to protect you.

Individual liberty – Protection of your rights and the right of others you work with. (You can express yourself without fear).

Respect and Tolerance – Understanding that we all don't share the same beliefs and values.

Tutor Support

Each tutor is there to support and enhance your development whilst on a programme. They see your advancement as a joint responsibility. Your vocational tutor will be there, along with the Wellbeing Team to guide you through to ensure you are on track to achieve your goals. They will be your first point of contact, to help develop your study skills and build your confidence.

Teaching Assistants

The Teaching Assistant Team are very friendly, approachable and support you to achieve. They enjoy working with you and seeing progression. They are passionate about working with young people to make a difference in their well-being and personal development.

The Teaching Assistants can:

- support learners in the classroom
- work with learners 1:1 – if needed
- work with learners as part of a small group.

The support the team offer learners is tailored to meet their individual needs. They ensure tasks are fun and enjoyable.



*16-19 Guaranteed Bursary Fund

You will be entitled to a weekly payment, based on your attendance if you are aged 16-18 as of 31st August 2022 and you are:

- in care (including unaccompanied asylum-seekers)
- a care leaver
- receiving Universal Credit (was Income Support) in your own name
- disabled and receiving Personal Independence Payments (was Disability Living Allowance) AND Employment Support Allowance in your own name.

*16-19 Discretionary Bursary

You will be entitled to support towards any course equipment, uniform and travel costs if either you or your parent/ guardian are in receipt of one of the following benefits:

- Job Seekers Allowance
- Child Tax Credit
- Council Tax Benefit
- Universal Credit
- Employment Support Allowance
- Housing Benefit
- Pension Credit
- Household income less than £20K

*Free Meals

You will be entitled to free meals at College if you are aged between 16-18 years on 31 August 2022 and meet the criteria below or Aged between 16-24 on 31 August 2022 have an EHCP and meet the criteria below and either yourself or parent/guardian receives one of the following:

- Job Seekers Allowance
- Employment Support Allowance
- Guaranteed element of State Pension Credit
- Support under Part VI of the Immigration and Asylum Act 1999
- Working Tax Credit Run-On (paid for 4 weeks after they stop qualifying for Working Tax Credit)
- Child Tax Credit (provided they are not also entitled to Working Tax Credit and have an annual income of no more than £16,190)
- Universal Credit (during initial roll-out of this benefit)

*Funding for Childcare

If you are a young parent** and under the age of 20, the 'Care to Learn' scheme can help to cover the costs (upto £160 per week) of your childcare while you are studying. As an educational provider we are able to assist you with your application form for 'Care to Learn'. You can get advice on accessing 'Care to Learn' at your initial college interview so be sure to ask the Recruitment Team about the process when you arrive. For more information, visit www.gov.uk/care-to-learn

*Subject to Government changes

**Please note, this support is not available for Apprentices



STUDY PROGRAMMES

What is a Study Programme?

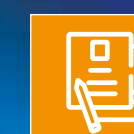
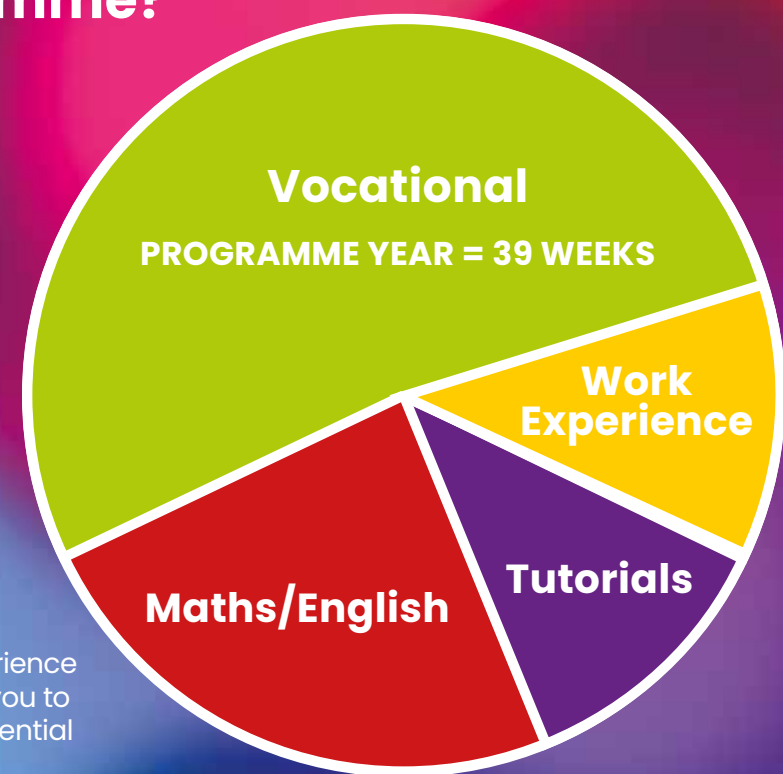
- Achievement of a recognised qualification – if appropriate
- Functional Skills English and maths or GCSE English and maths where grade D/3 has been achieved
- Relevant work experience
- Citizenship

Study programmes are designed to help you study and achieve a vocational qualification, up to Level 2, and a recognised qualification in English and maths.

City College Peterborough offer various practical work-based vocational courses or relevant qualifications to study whilst you decide what career path you would like to follow.

The College will organise meaningful work experience related to your chosen vocational area to help you to develop your employability skills and create potential employment options.

Your programme of study will include Work Skills Enrichment, Functional Skills English and maths or GCSE English and maths and work experience.





Animal Care Level 1

Qualifications:
Level 1 Award, Certificate & Diploma in work-based animal care.

Animal Care aims to teach interested learners the skills necessary to thrive in a work-based animal care career. Using the colleges animal hub, you will explore topics around animal husbandry and welfare as well as look into wildlife conservation and the worlds ecosystems. On the course, you will learn how to clean enclosures, build habitats, create diet plans, and carry out health checks while working with a variety of domestic and exotic species. Everything from fluffy hamsters to giant bugs await you this coming academic year!



Scan here for further information.

Learner story

Racheal joined on to our step-up class that served as a pilot for the new animal care course in 21/22, working with animals has really helped her come out of her shell, Racheal has developed her self-confidence, independence, and class engagement by being able to access a supportive animal care course. Racheal now can service enclosures completely independently and is on her way to build skills for work and adult life.

Jacob Scicluna-Davies – Tutor



Business and Enterprise Levels 1 & 2

Qualifications:
Award, Extended Award, Certificate, Extended Certificate and Diploma

Study the world of business at your own pace and level, from entry 3 to level 2 in an office teaching environment setting. Progress onto an apprenticeship after completing the course at level 2. Join an employment industry that is expected to grow by 10% from 2016 to 2026 – who knows you could become the next Alan Sugar!



Scan here for further information.

Learner story

This is Matt's second year in Business and despite lockdown and extended isolation periods he has achieved both level 1 and level 2 diplomas over the 2 years. Matt was really motivated to work at home and enjoyed our weekly Teams meetings. Matt became Learner Leader for the group and has taken this role with great confidence. I am looking forward to working with Matt next year in Supported Interns and encouraging him to participate in the world of work

Trudie Savage – Tutor





Childcare Levels 1 & 2

Qualifications:
CACHE Level 1 Award, Certificate and Diploma in Caring for Children
CACHE Level 2 Award, Certificate and Diploma in Caring for Children

Studying childcare is the perfect first step to a career working with young children. If you are interested in working with children or would like to understand more about how they learn and grow, childcare is the course for you.



Scan here for further information.



Georgia

Learner story

My name is Georgia and I started studying at City College Peterborough in 2020 working towards Childcare Level 1. During the time I have been here I have developed skills on my course that have helped me improve for the future. The staff have been amazing at helping me to build my confidence, providing support, not just with functional skills and the qualification, but also through arranging industry experience outside of college hours. By working hard I have been able to move onto starting an apprenticeship which is helping me to shape my future.



Hairdressing Level 1

Qualifications:
Level 1 Introduction to Hair and Beauty

Hairdressing VRQ Level 2

Qualifications:
Level 2 Certificate in Barbering
Level 2 Certificate in Women's Hairdressing

Hairdressing can give you skills for life! If you are creative with a can-do attitude to learn new skills, then a career in hairdressing is for you.

With a balance of practical skills and theory knowledge, you can accomplish great things. Not only will you learn new skills, we at City College Peterborough can also help you to improve personal skills from communicating and confidence to have the ability to work with employers in the industry.



Scan here for further information.



Learner story

My name is Jess I am 19 years old. I have been at City College Peterborough for 3 years now I came from Marshfield school. My first year was spent doing level 1 hair. I felt very shy when I first started, but my tutor for Hairdressing was very helpful. and assured me that I would get the help I need. Throughout the 3 years I've been here I have learned a lot of things to do with my course. I have completed work experience at a salon called Chic Boutique based in Eye. I enjoyed going there and experiencing being in a salon and the working environment.

Since coming to City College Peterborough, my confidence has been boosted a lot, after completing level 1 and 2 Hairdressing I'm now doing the Barbering course. I'm looking for work in a salon so I can make a life of my own.

I recommend coming to City College Peterborough there are plenty of friendly staff ready to help teach you.

Jess



Health and Social Care Levels 1 & 2

Qualifications:
NCFE Level 1 In introduction to health, social care and children's and young people's settings.
NCFE Level 2 Diploma in health and social care

In health & social care, you will develop the knowledge needed to have a rewarding career in one of Britain's largest sectors. You will cover topics such as safeguarding, equality and diversity, human growth and development, communication, and the role of the health and social care practitioner. The level 3 course is a 2-year qualification and includes a mandatory requirement for work experience of a minimum of 175 hours.



Scan here for further information.



Learner story

I decided to come to JMC, John Mansfield Campus, City College Peterborough, so that I have the opportunities of gaining educational certificates that I could not have achieved through other colleges previously attended to. I wanted to learn in a smaller environment with friendly and supportive staff that can help me with my specific needs that are difficult from time to time.

At the end of my journey here at JMC, I would like to gain the qualifications needed to go to University so I can study nursing (which I can achieve through doing Health and Social Care course).

If you are considering learning/ attending JMC, you should take that chance as you may achieve more, with friendly and supportive staff helping you and guiding you along the way, whilst also meeting new learners, who are friendly and make the atmosphere welcoming.

Lucy



Hospitality and Catering Level 1

Qualification:
Level 1 Introduction to the Hospitality Industry

Culinary Skills Levels 1 & 2

Qualifications:
Level 1 Introduction to Culinary Skills
Level 2 Certificate in Culinary Skills
Level 2 Diploma in Culinary Skills

These qualifications are designed to improve your culinary skills to a high standard enabling you to look for employment in the exciting world of hospitality and catering. You will study topics like cooking methods, preparation techniques, health and safety, and food presentation. A perfect combination of practical and theory-based lessons in our industry-standard training kitchen.



Scan here for further information.



Learner story

My name is Jack, and I am 22 years old. I have been at City College Peterborough JMC for 3 and half years. My first course was catering with a great tutor called Marius. I really enjoyed doing catering for the last 3 years because we got to go on a trip to Italy in 2019 where we visited an ice cream factory, and I was the only one who tried squid down in Bari. Also, in catering we hosted events such as the celebration of learning at the Peterborough cathedral. I have changed a lot since I have been at the college, meeting new staff members and students. I am in my fourth year at City College Peterborough, and I am currently studying Supported internship where it will eventually end up with employment in work, where I would like to work within the retail industry. My supported internship this year with Trudie is going to help me get into the world of work. I am currently doing work experience at Morrisons manufacturing warehouse in Thrapston every Tuesday and Wednesday, packing fruit and vegetables onto palettes for delivery. I am really enjoying this and feel I may have found my future job.

I fully recommend joining City College Peterborough soon.

Jack



Motor Vehicle Entry Level 3 & Level 1

Qualifications:
Entry Level 3 Certificate in
Motor Vehicle Studies
Level 1 Certificate in
Motor Vehicle Studies

If you want to drive your future forward then study motor vehicle with City College Peterborough. If you are passionate about anything mechanical with a can-do attitude, we want to hear from you. Whilst studying your course you will gain confidence, communication skills and team building in both practical and theory lessons.



Scan here for further information.



Learner story

My name is Tyler I am currently studying Motor Vehicles and feel there is an even flow of theory and practical lessons. I am always offered constant support from the tutors throughout the year. The college are always up to date with tools and equipment and testing equipment in the workshop. When I first came, I wasn't confident with cars or tools, now a year on I am more confident with tools and will happily replace parts on a car. I am continuing to study here next year and hope to become a mechanic in the future.

Tyler



Introduction to Occupational Studies for the Workplace Entry Level 3 or Level 1

This course is designed to help you prepare to move on to a vocational course by giving you the opportunity to explore the occupational area of your choice such as childcare, motor vehicle, business, and catering among others. You will also have the opportunity to engage with lots of hands-on activities including crafts, gardening, and taking part in social/community projects.



Scan here for further information.



Learner story

Hi, my name is Jordan, and I am 19 years old. I first started at college in a tough period of Covid.

I started my journey in Occupational Studies and I felt nervous when I first started.

The things I enjoyed doing were English and Maths to get my qualifications. Sometimes I need some help in lessons and I usually get stuck at something, and I need to put my headphones on and get straight on.

The course that I am doing right now is Motor Vehicle 1, but I find it quite difficult to do and I usually struggle. But I do try my best and follow instructions to the best of my ability.

My opportunities at college will be creative because I'm very good at doing it. The hope for the future is to get a Work Placement for my skills and qualities.

I achieved my goals by doing a lot of work.

Jordan Wallis



Creative Craft Entry Level 3, Level 1 & Level 2



Scan here
for further
information.

Qualifications:
NCFE Entry Level 3, Level 1 and Level 2
Award in Creative Craft

“You can’t use up creativity. The more you use, the more you have,” said Maya Angelou. Here you will find that you are creative even though you think you are not. The more techniques you master, the more creative you become. In this course, we work on lots of bespoke creative projects, making crafts to sell. Every year is different with different learners. You can start at the comfortable level and work your level up over 1-3 years.



Learner story

I started Creative Industries in 2020, in the year before I was in Health and Social Care. I didn't feel like it's the right choice for me, so a teacher in the lesson helped me choose a course for next year. She said that I am a creative person, and that I should give it at least a try. Now it's my second year in Creative, I learned a lot, I learned about decoupage, gold leaf, woodwork and much more, I learned how to make something great from nothing. I enjoy every lesson. I learned a lot in here, you can be as creative as you want to be without anyone judging you. You have a chance to express yourself in a way you like.

GET CREATIVE!

GET INSPIRED!

Magda



Step Up (Skills for Education and Further Learning) Entry Level 1 – Entry Level 3



Scan here
for further
information.

Step Up is for learners with moderate learning disabilities.

This course provides a pathway into further learning, volunteering and day opportunities and helps to develop your independence, social skills, confidence and general life skills. Topics covered include arts and crafts, cooking, first aid, travel training, personal safety, washing, ironing and cleaning. You will also take part in regular enrichments activities within the community including bocchia, sailing, Beat This music studios, golf and much, much more! The Step Up course also includes stand-alone maths and English lessons including tutorials, as well as WOW Fitness Sessions, which promote vibrant emotional wellbeing, healthy lifestyles, good physical health and fitness. The sessions are FUN and exercise the mind and body and makes the learners feel energised, heard, mindful, motivated, supported, inspired and committed to becoming more active based on their health and mobility and achieve results that last.

Our staff provide personal care and can meet other support needs as outlined in the EHCP as well as communicating using Makaton and PECS. We have a fully accessible building complete with flat, garden and two new sensory rooms with SEN wellbeing on site to provide full, holistic support. If you are ready for your next adventure and want to continue developing your skills whilst having fun, then Step Up is the course for you!

Learner story

My name is Declan, this is my journey through City College Peterborough so far. I started College on the Step-Up Course in September 2020. It was quite daunting at first because I have never been in a college environment before. Eventually, slowly but surely, I got used to the environment around me and I got along with people very well. After about a year in Step Up,

in September 2021 I moved up to Occupational 1. It's basically an extension of Step Up but with extra activities like work experience, vocational areas and helping with life skills. I'm getting along very well with my peers currently; I hope to achieve more in the future so I can be more independent in my life.

Declan Hinnell





Scan here for further information.

Skills for Independence Courses for Learners with Learning Difficulties and Disabilities

SFI is for young adults with severe-complex needs. On SFI, you will be supported to develop your independence, confidence and communication skills in lessons that are fun and tailored to your needs. SFI will teach you basic life skills such as cooking, cleaning, washing, ironing and much, much more! You will also take part in regular trips and activities within the community including sailing, boccia, animal care courses, Beat This music studios and lots of other fun activities. The SFI courses includes stand-alone Maths and English lessons. SFI learners also have an opportunity to attend a residential!

Our staff provide personal care and can meet other support needs as outlined in the EHCP as well as communicating using Makaton and PECS. We have a fully accessible building complete with flat, garden and two new sensory rooms with SEN wellbeing on site to provide full, holistic support. In SFI, we help you develop the skills needed for your future and we can't wait to be a part of your next adventure.....



Learner story

I did SFI at college. It was really great and I enjoyed doing lots of new things. The staff helped me and were friendly.

My favourite things at college were cooking and going on trips with my friends. College made me happy and I would like to come to college again.

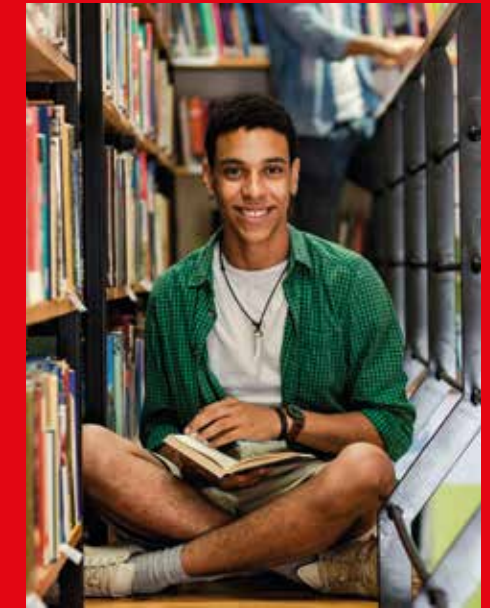
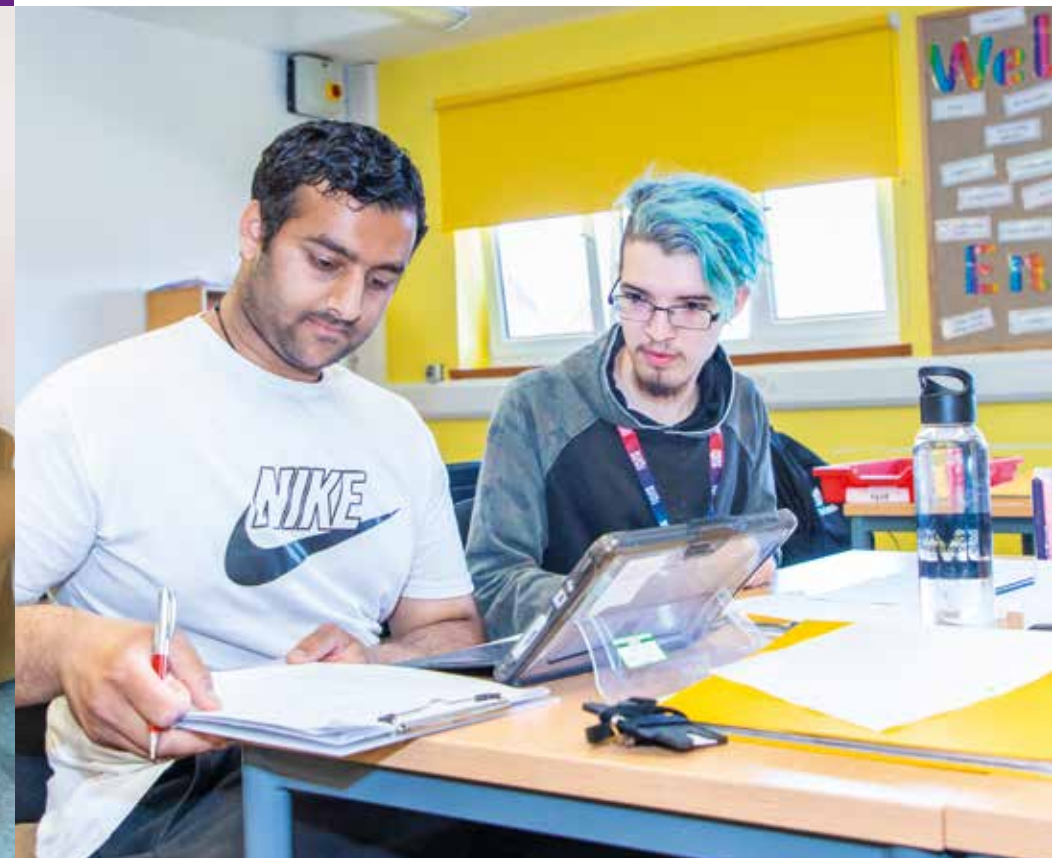
Kirsty



Scan here for further information.

Functional Skills English

The City and Guilds Functional Skills English course will help you to be confident and independent using English in real-life situations such as in the workplace. Good literacy skills will help you do your job better and help you to function effectively in society. Whatever your current ability in English we can help you improve and progress through the levels we offer here at City College Peterborough.





Functional Skills Maths

City College Peterborough offers a great fun way to learn maths that you can use in your everyday life. Whatever barriers you have with maths, we will work with you to help break them down so that maths becomes an enjoyable skill used in everyday situations.



Scan here for further information.



English for Speakers of Other Languages (ESOL)

If English is NOT your first language and you need to develop your speaking, listening, reading and writing skills, then this course is for you! You will learn vocabulary, grammar and pronunciation. You will learn English for everyday use. You will take an exam at the end of the year. There will be students from many different countries on the course, so you'll be able to learn lots about different cultures, which will open your eyes to new ways of seeing the world!



Scan here for further information.

Learner story

My name is Shahriar Ahmed Shibab and I have been a student at JMC for over 2 years. After finishing my ESOL course last year I decided to stay at college and enrolled on the Business and Enterprise course this year. My experience overall has been amazing and I think the college has a brilliant infrastructure. JMC has enabled me to explore the various opportunities on offer, to make the right choices and further develop my skills.

My work experience was completed in McDonald's (arranged through college) which really helped my confidence grow as I learnt so much whilst there. In my previous class I was a Learner Leader, but this year I am currently leading the Social Shout group here at JMC.

I have always found JMC to be a positive place with a healthy environment for students to learn in and with highly supportive teachers. If I ever had any doubts about my progression, further study, or my future the teachers would always re-assure me and I left class feeling better once again. I am very grateful for my place at college where I've been allowed to develop and grow and feel like part of them. They have added several values to my life and given me hope for the future

Shahriar Ahmed Shibab





S.E.A. (Support Educate Autism)

Are you on the Autistic Spectrum? S.E.A. is designed to help you build confidence, develop communication skills, explore new skills, work with others and develop social skills in order to transition to a vocational course at the college.



Scan here for further information.



Learner story

My name is Kyle I am 23 years old and have been at City College Peterborough for 2 years, The first course that I joined through the college was GAPP. I really enjoyed the GAPP course because it taught me skills that I can use to live as independently as possible and the group of students on the course was extremely small so I did not have to worry about the course being overcrowded. I am currently on the supported internships course this year my tutor for this course is Trudie and she is going to help me learn the necessary skills needed for future employment.

I choose City College Peterborough to continue my education as I know I will be fully supported during my time here, since starting city college I have become a more confident and outgoing person.

Kyle



Scan here for further information.

Supported Internships

If you are aged 16–24 and have a statement of special educational need or an Educational Health and Care Plan (EHCP) then our Supported Internship is designed to prepare you for a range of work opportunities. Our supportive teachers and job coaches will help you develop your confidence, independence, employability, and work skills.

Apply today and start your journey into an exciting career.



Learner story

My name is Charlie, I started at JMC feeling very shy, nervous and had little confidence in myself.

After this last term I am very happy with how much I have learned and didn't expect to learn so much. Adam is a good, funny teacher that has really boosted my confidence and made me laugh over the last year. I will be sad to leave my lovely group but have really enjoyed it.

Charlie has moved on to Westcombe Engineering on a work placement and hopes to make this a full-time position before the end of the year

Charlie



SOME OF OUR FACILITIES



WORK PLACEMENT Study Programme

Work Placements enable employers to access a pool of enthusiastic learners, at no cost to the business. With full support provided by our team, work placements break down barriers to train and support young people who may have a learning disability and helps to develop a diverse workforce.



What is a Work Placement?

- A partnership between an employer and City College Peterborough, supporting people aged 16–24 who may have a learning disability with work skills.
- A hands-on pathway to include employability skills and workplace opportunities.
- A training programme where both the employer and learner are fully supported by City College Peterborough to ensure a positive experience for all.
- Provides an unpaid trainee with experience in an organisation matched to their skills and aspirations.

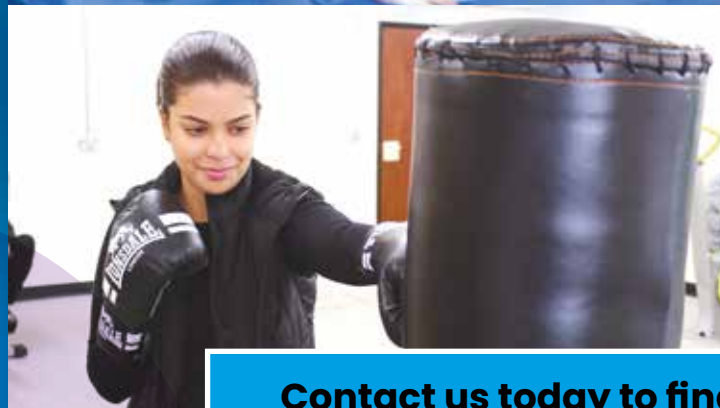
Contact us today to find out more:

sprecruitment@citycollegepeterborough.ac.uk



ENRICHMENT Study Programme

Enrichment offers learners the chance to explore topics outside of their vocational timetable to help discover new interests and learn new things about themselves. Enrichment clubs are purely for self-development and fun and we do not offer qualifications alongside them, but they can support learners in expanding social circles and putting life skills into practice outside of the classroom. Enrichment clubs cover a range of different interests and make a perfect supplement for free time in a young person's timetable.



Contact us today to find out more:
sprecruitment@citycollegepeterborough.ac.uk



Social Shout is a college initiative to improve the social media presence of the John Mansfield Campus. Become involved in the group to enhance your college involvement and help bring your college experiences to life in the digital world.



@JohnMansfieldCampusCCP



@citycollegepeterborough



@citycollegepeterborough



@CCPboro

ARE YOU READY FOR THE NEXT LEVEL?

The new qualification equivalent to three A Levels
launching at City College Peterborough in 2023



T-Levels are a brand new qualification designed to give you a head start towards the future you want.

They follow GCSEs and are equivalent to 3 A Levels.

The 2-year qualification brings classroom and work placement together, on a course designed in collaboration with the best employers.

80% CLASSROOM 20% WORKPLACE

You'll spend 80% of the time in the classroom and 20% on a work placement to equip you with the knowledge and skills companies are looking for.

Your T-Level will help you to step straight into your chosen career, an apprenticeship or a degree.

We will be offering T-Levels in Catering, Education and Childcare, Health, and Management and Administration from September 2023.

Catering

A T-Level in Catering will boost your knowledge in a range of topics such as culinary quality; kitchen operations; health, safety and security; nutritional analysis; food safety practices and procedures; team working; and business, including risk assessment, waste management principles and supply chain management. You will also complete an occupational specialism in professional cookery and develop your understanding and skills in different food groups.

Health

A T-Level in Health will boost your knowledge in a range of topics such as the principles of good scientific and clinical practice, as well as fundamental scientific concepts and developing your understanding of standard operating procedures, management of equipment and work areas, stock control and storage, and the importance of quality standards, health and safety. And as health is one of the fastest growing industry sectors, you'll have a chance to make a huge difference to other people's lives and society as a whole. You will also complete an occupational specialism in either Supporting the Adult Nursing Team or Supporting the Care of Children and Young People.

Education and Childcare

A T-Level in Education and Childcare will boost your knowledge in a range of topics such as child development, safeguarding and special educational needs, and understanding the role of families and support agencies. You'll also dive into the specifics of social interaction, behaviour, and how language is acquired, as well as build your skills in becoming a reflective practitioner. You will also complete an occupational specialism in either Early Years Education and Childcare or Assisting Teaching.

Management and Administration

A T-Level in Catering will boost your knowledge in a range of topics such as culinary quality; kitchen operations; health, safety and security; nutritional analysis; food safety practices and procedures; team working; and business, including risk assessment, waste management principles and supply chain management. You will also complete an occupational specialism in professional cookery and develop your understanding and skills in different food groups.

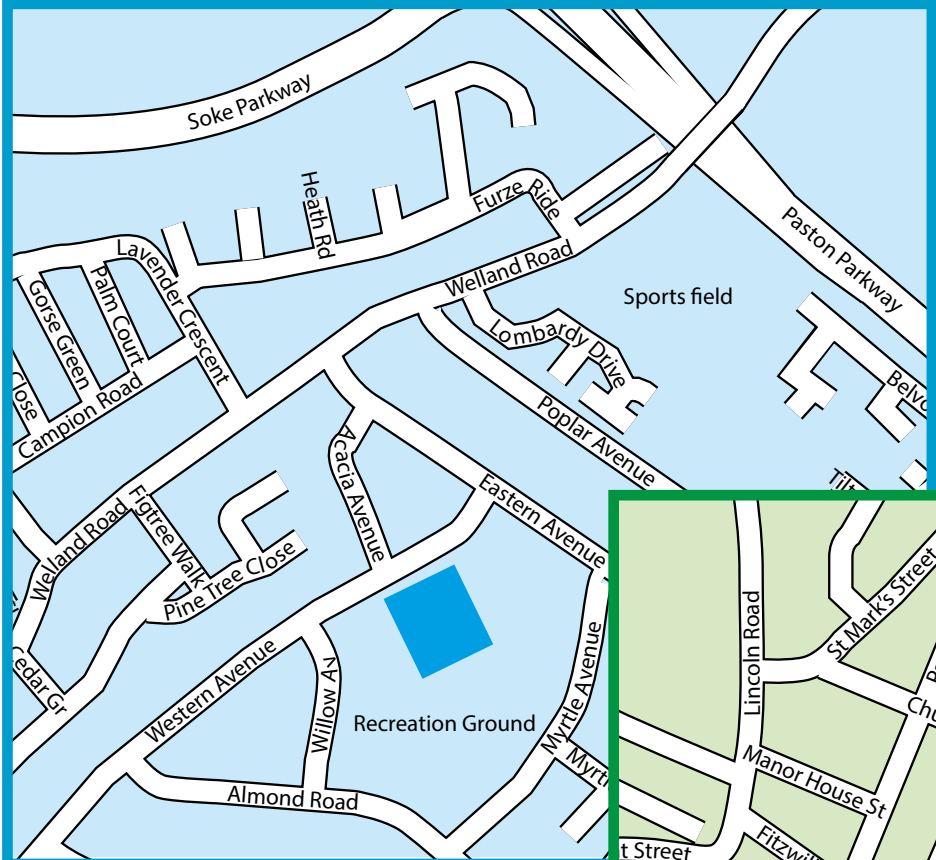


Wherever your future is heading, take it to the next level.

Where to find us . . .

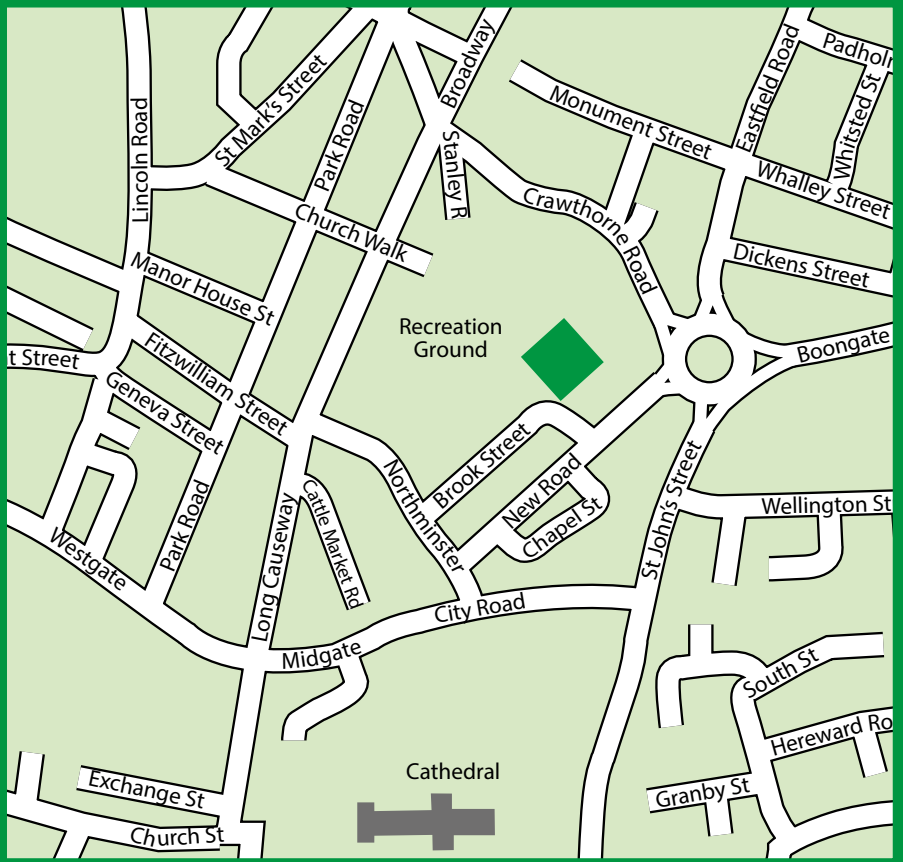


Working together, learning together



**John Mansfield Centre,
Western Avenue,
Dogsthorpe,
Peterborough
PE1 4HX**

**City College
Peterborough,
Brook Street,
Peterborough
PE1 1TU**



Contact us on:
sprecruitment@citycollegepeterborough.ac.uk
www.citycollegepeterborough.ac.uk

 **01733 761361**

Follow us on:
   @CCPboro





**City College
Peterborough**
Working together, learning together
Jean Hunt Building



**City College
Peterborough**
Working together, learning together
John Mansfield Campus



Study Skills
Work Experience
Functional Skills
T-Levels



Contact us on:



01733 761361

sprecruitment@citycollegepeterborough.ac.uk

citycollegepeterborough.ac.uk