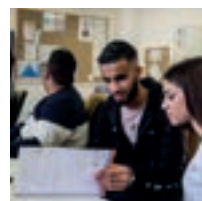
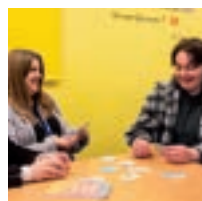
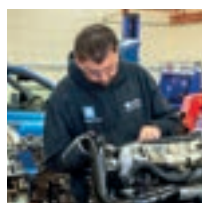




# YOUR CHOICES 2024/25

## 16-19+ Course Guide



 **City College  
Peterborough**  
*Working together, learning together*  
Jean Hunt Building



 **City College  
Peterborough**  
*Working together, learning together*  
John Mansfield Campus

Find the perfect course for you



[www.citycollegepeterborough.ac.uk](http://www.citycollegepeterborough.ac.uk)

# A Warm Welcome from the Principal

As a learner at City College Peterborough, you will be at the centre of everything we do. We want you, not only to reach your potential, but to be aspirational in your attitude towards personal development, whilst enjoying an inclusive, supportive, welcoming, safe and secure learning environment. It's about making choices that enable and support you on your future pathway.

We are exceptionally proud of our learners and take every opportunity to celebrate success. We recognise that success will look different for each individual learner and provide a supportive environment where you can make the most of college life.

As well as attending lessons, a typical course includes work experience which gives you the opportunity to develop practical skills and put to practice what you have learnt in the classroom. You will meet with expert speakers and participate in industry days and other enrichment events which include clubs, sporting activities and trips. These opportunities will develop you as an individual who is prepared and ready for the challenges that lay ahead.

We are 100% committed to providing the support you need to reach your goals.

We offer high-quality teaching within an informal and friendly atmosphere. We are determined to help you achieve the qualifications required, learn transferable skills, and ensure that you are encouraged to develop and make positive life choices.

We want to make your studying enjoyable while working towards achieving your goals.

You will find that staff at City College Peterborough committed, caring and ready to make sure you get the help, support and resources to achieve your goals and ambitions.

Our staff have high expectations of our learners and, whilst we may challenge you, this will be done in a supportive and positive way to ensure that you make the most of the opportunities that being a learner at City College Peterborough has to offer.

I look forward to welcoming you at City College Peterborough.



**Tasha Dalton-Winterton BEM**

Principal John Mansfield Campus/Day Opportunities provision

## How to Contact Us

Contact our Information, Advice and Guidance trained Recruitment Advisors to help you choose the right course that suits you.

The recruitment team will be more than happy to help.

You can contact us at

[sprecruitment@citycollegepeterborough.ac.uk](mailto:sprecruitment@citycollegepeterborough.ac.uk)

or **01733 761361**

[www.citycollegepeterborough.ac.uk](http://www.citycollegepeterborough.ac.uk)

Location maps can be found on the inside back cover of this guide.

# Why should you study with us?

## Amazing facilities and equipment

We have industry standard facilities including a motor vehicle workshop, a hairdressing salon, purpose built business enterprise space, catering kitchens, health and wellbeing centre and outdoor gym. These are all kitted out with the necessary resources to enable your learning.

## Social environment

Meet new people and make life-long friends. Take part in college trips and extra curricular activities.

## Central location

We have two campuses based in central Peterborough. One in the city centre and the second in Dogsthorpe.

## A supportive, fun learning environment

Learners are treated like adults and your decision making is promoted.

## A better future

Our courses are designed to help you achieve nationally recognised qualifications and experience in both theory and practice. Whether your destination is the world of work or higher/further education, our courses will ensure you are fully prepared for your future.

**Please contact our Recruitment Team on:**

**01733 761361** (option #3) or  
[sprecruitment@citycollegepeterborough.ac.uk](mailto:sprecruitment@citycollegepeterborough.ac.uk)

## Open Events

Come along to meet our tutors and see our facilities. Our open events for 24/25 are:



*You don't have to wait until these dates to take a look at what City College Peterborough has to offer! Contact our recruitment team to arrange a visit.*

## Staying in education after 16

Young people in England must stay in education until they are 18. This does not mean young people have to stay at school!

You can enrol onto any of the following:

- full-time education (e.g. at a school or college)
- part-time education or training

combined with one of the following:

- employment or self-employment for a minimum 20 hours per week
- volunteering for a minimum 20 hours per week.





## Learner story

Ben has been with the college a couple of years now and the transformation has been outstanding. When Ben first came to us, he had barriers around his own confidence and being able to effectively engage in an educational setting. Ben didn't have the courage to come into classes and avoided talking about his future or making plans for his personal skills and development. Fast forward two years Ben is now a very active and helpful member of his Animal Care class; offering support to other learners, producing fantastic coursework and showing growth in confidence and engagement.

# Student Support

## Support for Learners with Learning Difficulties or Disabilities

At City College Peterborough, we pride ourselves on our effective, supportive, and inclusive SEN department. Our SEN hub is located at the John Mansfield Campus, and our high needs support is located in our Jean Hunt Building at Brook Street. We find innovative support solutions for all our learners, and we have industry standard facilities including our motor vehicle provision.

At the John Mansfield Campus we offer various forms of support including individualised learning plans, opportunities for developing soft-skill outcomes and preparing for adulthood, which often take place in our SEN Hub. The Hub is a resource centre, available to all learners, with dedicated staff members specialising in SEN support. Additionally, the Hub has a quieter, personable atmosphere which students can take advantage of to catch up on studies, regulate themselves or seek additional support. The College is currently expanding the outdoor spaces and opportunities available to learners, to help to support both professional and sensory needs.

Our Jean Hunt Building, which is situated at our Brook Street Campus, specialises in supporting higher-need learners with life skills, communication, and sensory needs. A key feature of the building is the multi-sensory room which has been designed by previous students and staff with a nautical theme to provide a calming atmosphere and appeal to all learners. The building has a garden space for outdoor learning and emotional regulation. Our SEN team works across both sites and supports students by ensuring Education and Health Care Plans are followed, updated and reflect the needs of the learner. Independence and a pathway through education are key aspects of the team's responsibilities alongside ensuring needs are being met both inside and outside the classroom environment. The team pride themselves on their strong professional relationships with both learners and parents – ensuring each student benefits from an individualised approach that supports their progression.



## Wellbeing Support

Here at City College Peterborough we have a dedicated Wellbeing Team. The staff are here to ensure that you are given the support you need in order to be able to overcome any barriers that are holding you back from achieving and progressing onto your next steps in education, employment or training.

The team are dedicated to ensuring your safety and work in close partnership with teachers, parents/carers and local and national agencies such as the Targeted Youth Support Service within the local authority. Together they can assist you with anything from housing and benefits advice to counselling services if needed.

The Wellbeing Team can help with:

- Emotional Support (counselling and anger management)
- Mediation with friends
- Referral to external support services.

Our Wellbeing Officers offer help with both your academic choices, funding and money issues and any additional needs you may have. You will be allocated a Wellbeing Officer who will also liaise with relevant professionals to assist in your transition to independence. We offer support in various aspects of daily life, such as using public transport, supporting a healthy lifestyle, managing money and improving interpersonal skills.

# Student Support

## Equality & Diversity

The College believes that education is a right for all and will actively work towards offering equality of access and opportunity to all learners.

## Safeguarding

City College Peterborough are committed to promoting the welfare, safety and protection of all children, vulnerable adults, learners and staff.

## Prevent

Prevent is a government strategy to stop people becoming terrorists or supporting terrorist or extremist causes. If you think someone is being exploited you can raise your concern with any of the nominated safeguarding contacts that are displayed on a board close to the College's reception or you can speak to your tutor or any person where a Bee Safe symbol is displayed and they will help you.

## British Values

In the United Kingdom society is held together by Fundamental British Values.

**Democracy** – Your right to vote for policies where your opinion counts.

**The rule of law** – Nobody is above the law which is there to protect you.

**Individual liberty** – Protection of your rights and the right of others you work with. (You can express yourself without fear).

**Respect and Tolerance** – Understanding that we all don't share the same beliefs and values.

## Tutor Support

Each tutor is there to support and enhance your development whilst on a programme. They see your advancement as a joint responsibility. Your vocational tutor will be there, along with the Wellbeing Team to guide you through to ensure you are on track to achieve your goals. They will be your first point of contact, to help develop your study skills and build your confidence.

## Teaching Assistants

The Teaching Assistant Team are very friendly, approachable and are there to support you to achieve. They are passionate about working with young people to make a difference in their wellbeing and personal development.

The Teaching Assistants can:

- support learners in the classroom
- work with learners 1:1 – if needed
- work with learners as part of a small group.

The support the team offer learners is tailored to meet their individual needs. They ensure tasks are fun and enjoyable.





# What is Preparing for Adulthood?

The aim of Preparing for Adulthood is to help you gain transferable skills needed to be able to have fulfilling lives, learning life skills to achieve independence. It is an important part of the journey into adulthood. We offer preparation and guidance that you can develop and apply in the real world the essential skills required in independent living, such as:

- looking after yourself and others
- communicating (telephone and face to face)
- travel training (bus/road safety)
- personal hygiene
- support to access the community



## Vocational Technicians

We have a team of trained technicians that support and work within specific vocational classes the techs are familiar with the course content and have a wealth of industry knowledge which is used to provide quality support and teaching.



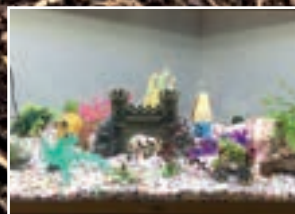
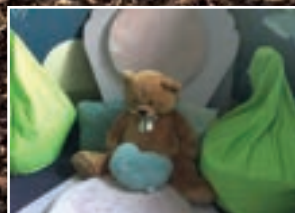
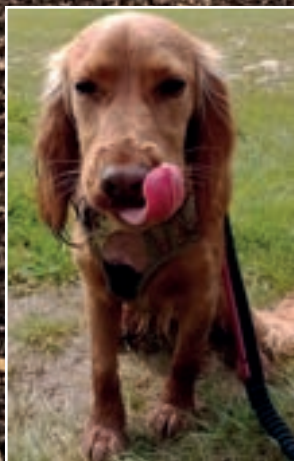
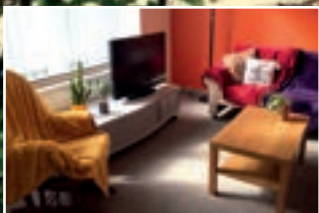
## Complex Need Provision

Within Study Skills, we have a fully accessible complex need provision at our Jean Hunt Building, on our Brook Street Campus. This bespoke building is home to a flat, sensory room and garden complete with trampoline as well as staff that can meet your needs and support you both in and outside the classroom, e.g. with communication needs, personal care, medication, eating and drinking.

Our Jean Hunt provision includes our S.E.A, Skills for Independence and Step Up courses. We also have access to a variety of holistic support including play therapy, talking therapy, Go Chat, enrichment sessions, wellbeing, social care and our very own therapy dog called Thistle who works part time at Jean Hunt.

Our Jean Hunt provision is for learners with complex needs who would like to continue their education, become more independent and develop their life skills in a quiet, calm, patient and supportive environment.

If this sounds like you or someone you know, then get in touch to start planning your next steps!





## 16-19 Guaranteed Bursary Fund\*

You will be entitled to a weekly payment, based on your attendance if you are aged 16-18 as of 31st August 2023 and you are:

- in care (including unaccompanied asylum-seekers)
- a care leaver
- receiving Universal Credit in your own name
- disabled and receiving Personal Independence Payments AND Employment Support Allowance in your own name



## 16-19 Discretionary Bursary\*

You will be entitled to support towards any course equipment, uniform and travel costs if either you or your parent / guardian are in receipt of one of the following benefits:

- Job Seekers Allowance
- Child Tax Credit
- Council Tax Benefit
- Universal Credit
- Employment Support Allowance
- Housing Benefit
- Pension Credit
- Household income less than £20K

## Free Meals\*

You will be entitled to free meals at College if you are aged between 16-18 years on 31 August 2023 and meet the criteria below or aged between 16-24 on 31 August 2023, have an EHCP and meet the criteria below and either yourself or parent/guardian receives one of the following:

- Job Seekers Allowance
- Employment Support Allowance
- Guaranteed element of State Pension Credit
- Support under Part VI of the Immigration and Asylum Act 1999
- Working Tax Credit Run-On (paid for 4 weeks after they stop qualifying for Working Tax Credit)
- Child Tax Credit (provided they are not also entitled to Working Tax Credit and have an annual income of no more than £16,190)
- Universal Credit (during initial roll-out of this benefit)

## Funding for Childcare\*

If you are a young parent and under the age of 20, the 'Care to Learn' scheme can help to cover the costs (upto £160 per week) of your childcare while you are studying. As an educational provider we are able to assist you with your application form for 'Care to Learn'. You can get advice on accessing 'Care to Learn' at your initial college interview so be sure to ask the Recruitment Team about the process when you arrive. For more information, visit [www.gov.uk/care-to-learn](http://www.gov.uk/care-to-learn)

\*Subject to Government changes





# Study Programmes

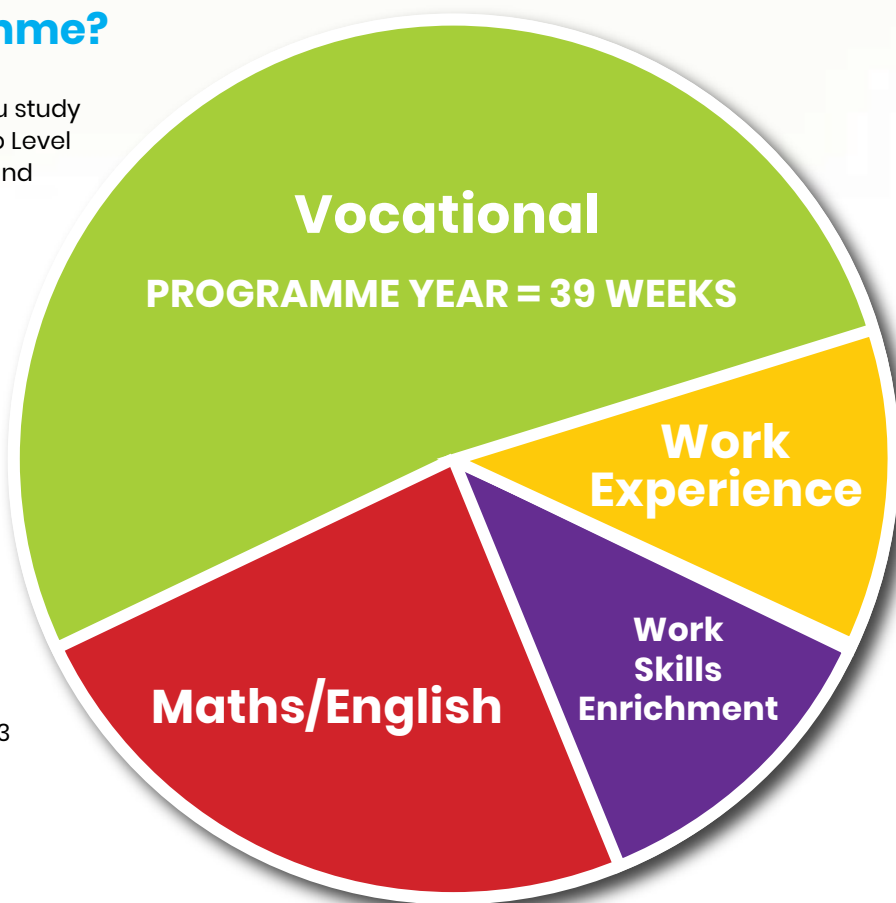
## What is a Study Programme?

Study programmes are designed to help you study and achieve a vocational qualification, up to Level 2, and a recognised qualification in English and maths.

City College Peterborough offer various practical work-based vocational courses or relevant qualifications to study whilst you decide what career path you would like to follow.

The College will assist you to organise meaningful work experience related to your chosen vocational area to help you to develop your employability skills and create potential employment options. Your programme of study will include:

- Achievement of a recognised qualification – if appropriate
- Functional Skills English and maths or GCSE English and maths where grade D/3 has been achieved
- Work experience
- Work skills/Employability





## Animal Care Levels 1 & 2

### Qualifications:

Level 1 Award, Certificate, Extended Certificate & Diploma  
in work-based Animal Care C&G

Level 2 Pass, Merit, Distinction (+) in Animal Care C&G

Animal care level 1 is ideal for those starting out in exploring a career in the animal industry. You will tackle topics around animal husbandry, feeding and handling as well as look into animal welfare, law and guidelines. The level 1 course features a mix of portfolio-based evidence and live assessments. Animal care level 2 aims to build on skills covered in the level 1 qualification with an emphasis on independent work and self-driven research. The course delves deeper into topics around animal biology, behaviour, and conservation. The unit houses a variety of animals from guinea pigs and hamsters to snakes and tarantulas.

## Progression and Pathways

The level 1 serves as an introductory course to the topic of animal care, once complete you will have the skills necessary to access level 2 animal care-based courses.

The level 2 course has no entry requirements but is more advanced than the level 1, so a cemented understanding of animal care is highly recommended. The Level 2 course looks great on a C.V. for those wanting to enter the animal care industry, it also makes for a stepping stone for learners wanting to go into higher education in the subject.







## Business and Enterprise Level 1 and level 2 Certificate in Business Administration

Studying business administration will give you the confidence, skills and knowledge to progress into the business world. This course will enable you to plan for the future and open up the world of possibilities to run your own business.

### On this course you will learn:

- communication (face to face and telephone)
- team work skills
- office skills
- customer service
- create individual business documents
- basic administration tasks
- organisation skills
- interview skills

Upon completion of this course, you could progress onto an apprenticeship, into employment within a business environment or continue your college education with higher levels.

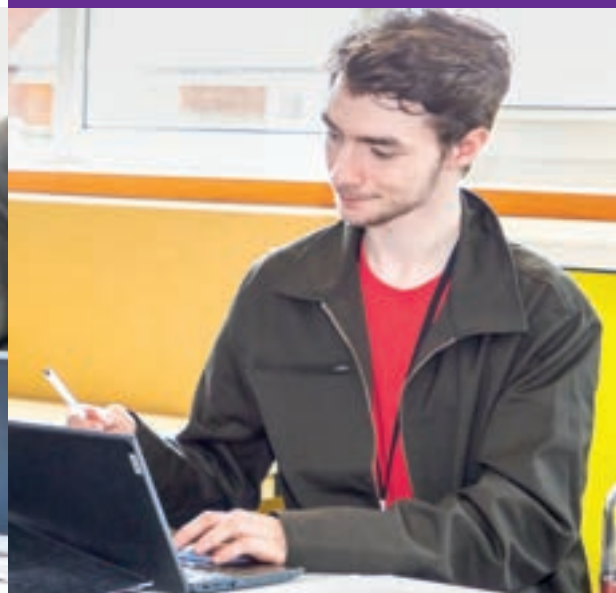
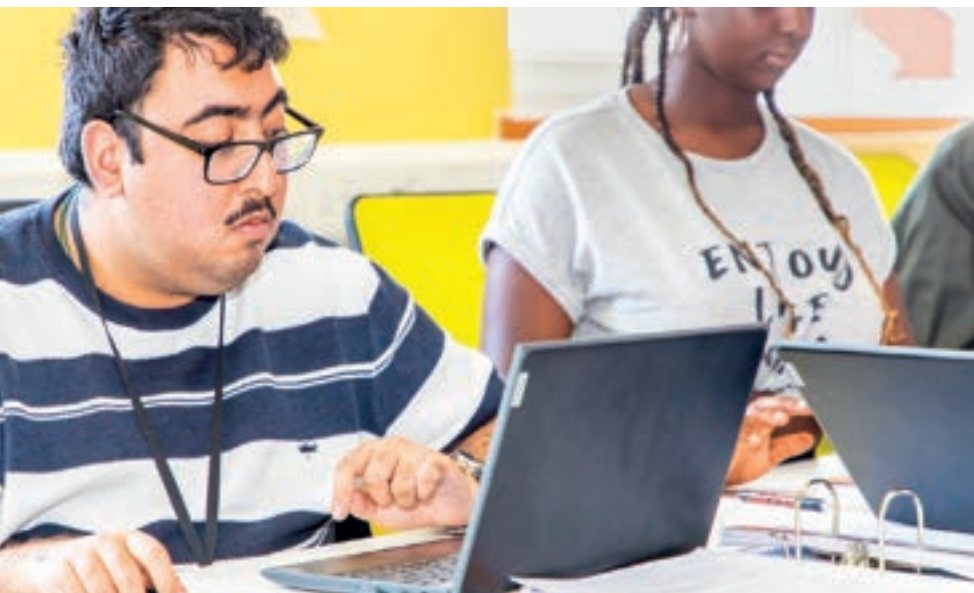
## Learner story

Hi my name is Jordan and I'm 21 years old, and this is my journey for City College Peterborough.

I started a new course doing Business and Enterprise Administration Level 1 in 2022. The things that I really enjoyed was learning ICT skills and learning about all the different types of businesses there are. I got to design my own business logo and business ideas.

I am still doing Math and English classes to get ready for my exams and I hope eventually I will pass them in the future. I hope to complete business and go on to do Level 2 business next year.

I feel I have achieved a lot of skills and gained confidence by attending business classes and completed a lot of work for business admin.





## Childcare Levels 1 & 2

### Qualifications:

CACHE Level 1 Award, Certificate and Diploma in Caring for Children

CACHE Level 2 Award, Certificate and Diploma in Introducing Caring for Children

Studying childcare is the perfect first step to a career working with young children. If you are interested in working with children or would like to understand more about how they learn and grow, our introduction to childcare is the course for you.

## Pathways

Level 2 Childcare Apprenticeship

Level 3 Childcare course

Employment in Children play centers,  
toy shop





## Creative Craft Entry Level 3, Level 1 & Level 2

### Qualifications:

NCFE Entry Level 3, Level 1 and Level 2  
Award in Creative Craft

"You can't use up creativity. The more you use, the more you have," said Maya Angelou. Here you will find that you are creative even though you think you are not. The more techniques you master, the more creative you become. In this course, we work on lots of bespoke creative projects, making crafts to sell. Every year is different with different learners. You can start at the comfortable level and work your level up over 1-3 years.

## Further Studies and / or Employment routes in:

- Computer Gaming Design ... Character and Environment
- Theatre design ... Costume/Make Up/Special Effects
- Graphic Design ... Logos, Brochure, Packaging
- Commercial Painting ... Mural s... Corporate events ... Special Events
- Portraiture ... Painting and Photography ... Street Caricature
- Fashion Design ... Dressmaking
- Animation, Traditional and Digital
- Furniture Design, Toy Design







## ESOL Course (English for Speakers of other Languages)

### Qualifications:

Qualification: City & Guilds ESOL Skills for Life  
(Entry Level 1 – 3)

This course will develop your speaking, listening, reading, and writing skills. It aims to improve your vocabulary, grammar, and pronunciation. You will learn English for everyday use and have an opportunity to prepare for an end of year exam.

In class you will take part in a lot of different activities. There will be opportunities to work in small groups on projects and practice speaking English in pairs about everyday topics from hobbies and interests to your future-plans. You will take part in class discussions about topics such as different festivals and cultures, and current affairs.



You will be participating in Work Skills Enrichment sessions – this will help to improve and build your employability skills, such as communication skills and teamwork. Support will be provided to create an individualised Curriculum Vitae (CV). Furthermore, there will be opportunities for you to attend a work placement to experience working in the UK – this will contribute to your CV.

## Pathways

Once you have completed Entry 3 you can complete a vocational course of your choice.

## Learner story

### ESOL Journey

Hello, my name is Andreea and I am 17 years old. I came to England on 25th May 2022, from Moldova. I moved here with my family for a better life.

At the beginning, it was hard for me and my family to adapt in a new country, culture, and language. The most difficult part was the language. I studied at secondary education in Moldova, so I wanted to continue my education here as I want to become a police officer. As I couldn't speak English, I chose to do an ESOL course at John Mansfield Campus (JMC) to learn and improve my English and Math skills.

I began this course in September 2022 at EI and now in May 2023 I have just completed my E3 in Maths and I am finally preparing for my E3 ESOL Writing Skills exam.

I have learnt a lot from my time at JMC and I have made new friends. I felt safe here, with everyone being friendly and supportive. The tutor is knowledgeable and supportive, always willing to guide and mentor me through my learning journey. JMC gave me the chance to broaden my horizons. I had the opportunity to interact with individuals from diverse backgrounds, and this helped me to appreciate different cultures and worldviews.

By AErermia  
May 2023



## Hairdressing

### Qualifications:

Level 1 Introduction to Hair and Beauty

Level 2 Certificate in Barbering

Level 2 Certificate in Women's

Hairdressing

Hairdressing can give you skills for life! If you are creative with a can-do attitude to learn new skills, then a career in hairdressing is for you.

With a balance of practical skills and theory knowledge, you can accomplish great things. Not only will you learn new skills, we at City College Peterborough can also help you to improve personal skills from communicating and confidence to have the ability to work with employers in the industry.



## Pathways

### Level 1 Hairdressing An introduction to the Hair and Beauty sector

#### WHAT COULD THIS QUALIFICATION LEAD TO?

This qualification could lead to jobs such as:

- Hairdressing Salon Assistant
- Beauty Salon Assistant

The learner could progress onto an apprenticeship at level 2 in either hairdressing or beauty therapy or other qualifications such as such as:

- Level 2 Diploma in Woman's Hairdressing
- Level 2 Diploma in Barbering

### Level 2 Certificate in Women's Hairdressing

#### WHAT COULD THIS QUALIFICATION LEAD TO?

This qualification could lead to jobs such as:

- Hairdressing

The learner could progress onto an apprenticeship at Level 3 in either Hairdressing or Barbering or other qualifications such as:

- Level 3 Diploma in Woman's Hairdressing
- Level 3 Diploma in Barbering
- Level 3 Diploma for Colour Technicians
- Level 3 Diploma for Cutting and Styling Technicians
- Level 3 Diploma in Hair Services

### Level 2 Certificate in Barbering

#### WHAT COULD THIS QUALIFICATION LEAD TO?

This qualification could lead to jobs such as:

- Barbering

The learner could progress onto an apprenticeship at Level 3 in either Barbering or Hairdressing or other qualifications such as:

- Level 3 Diploma in Barbering
- Level 3 Diploma in Woman's Hairdressing
- Level 3 Diploma for Colour Technicians
- Level 3 Diploma for Cutting and Styling Technicians



## Health and Social Care Levels 1 & 2

### Qualifications:

NCFE Level 1 In introduction to health, social care and children's and young people's settings.

NCFE Level 2 Diploma in health and social care

The Supported Internship programme is focused on you learning the skills to eventually find a paid job when you leave college. Young people do most of their learning at work while on the job to develop employability skills and experience. With help from supportive teachers and job coaches, the right opportunities and preparation; nearly all our young people with SEND move into employment or apprenticeships. All you need is motivation and commitment.



### SUBJECTS YOU WILL COVER INCLUDE:

- communication skills at work; telephone and email
- equality, diversity and inclusion in the workplace
- signposts for support for job application when you leave college
- safeguarding, health and safety
- the application process: writing CV, cover letters and application forms and mock interview techniques
- job search skills
- attendance to careers fayres, site visits of different industries, team building activities and community spaces

## Pathways

Level 1 Pathways

Level 2 Health and Social Care  
Apprenticeship

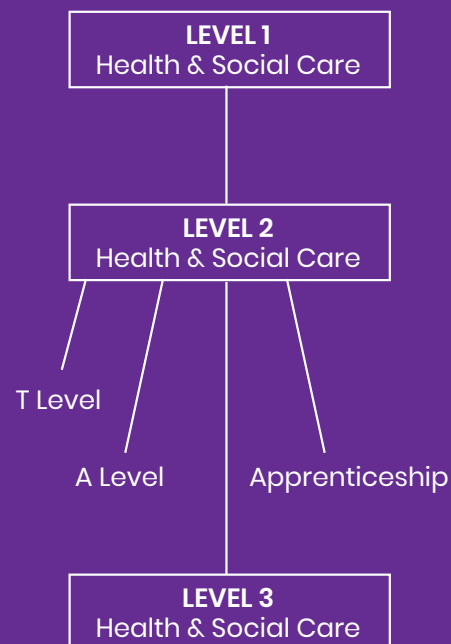
Level 2 Pathways

Level 3 Health and Social Care  
T Levels

Employment

Apprenticeship

A-Levels







## Hospitality and Catering

### Qualifications:

Level 1 introduction to the hospitality industry

This qualification will give you a good basic knowledge of the industry required to enter the hospitality industry.

You will study topics such as health and safety, food safety, preparing and cooking of food and learning about the different places and jobs you could progress into in the hospitality and catering industry.

Also, on the course you will complete work experience, visit hospitality establishments, work skills enrichment and host visitors which happen throughout the year along with supporting charity events.

A perfect combination of practical and theory-based lessons in our up to date kitchen which mirrors the industry.

This is a foundation course, and you will need no previous knowledge or experience of the industry.

## Pathways

### Level 1 – Introduction to the Hospitality Industry

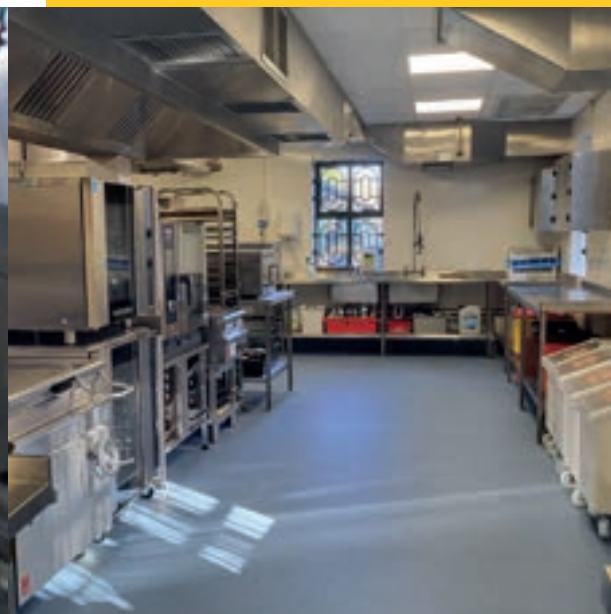
On the course you will build your skills which could lead to progression onto level 1 culinary skills, employment or an apprenticeship.

### Level 1 – Culinary Skills

On the course you will build on your skills which could lead to progression onto level 2 culinary skills, employment within the industry, supported internship or level 2 apprenticeship.

### Level 2 – Culinary Skills

After completing level 1 culinary skills you will build and increase your skills which can take you into a commis chef/chef de partie position within the industry, supported internship or level 3 apprenticeship/qualification.





## Culinary Skills Level 1 Award and Level 2 Certificate in Culinary Skills

These qualifications are designed to improve your culinary skills to a high standard enabling you to look for employment in the exciting world of hospitality and catering or progress into further education.

On the course you will study topics such as health and safety, food safety, use of different types of kitchen equipment, preparing and cooking food to a high standard, learning how to present food to a high standard and working to deadlines.

You will undertake practical and theory assessments with allocated timeframes.

Also on the course you will complete work experience, work with guest speakers, visit hospitality establishments, work skills enrichment and host guest events which happen throughout the year along with supporting charity events.



## Learner story

My name is Sara and I am 21 years old. I have been at City College for 3 years, studying hospitality and catering and I am now completing my level 2 certificate in culinary skills. In my time at the college, I have completed my food safety level 2 certificate and improved on my knife and cooking skills.

I have worked on events both in the kitchen as a chef and front of house as a waitress. I enjoyed learning the different skills and when I was a waitress it helped me to improve my communication and listening skills as I was a little shy at first.

I have visited the RAC club in Pall Mall, London and was shown around the hotel and it made me think of the different jobs and places I could work outside of Peterborough.

I helped raise money for the foodbank in Peterborough by making Christmas goods and selling them. We raised enough money to buy food to make 560 meals for people across Peterborough!

This year I will be going into a job in a care home to work as a chef. I will be taking the skills I have learnt from the course into my new job.

I fully recommend joining City College Peterborough as I have been given the opportunity to learn new skills and be creative in my work. The course has helped me to help support my family at home by cooking them some healthy meals.



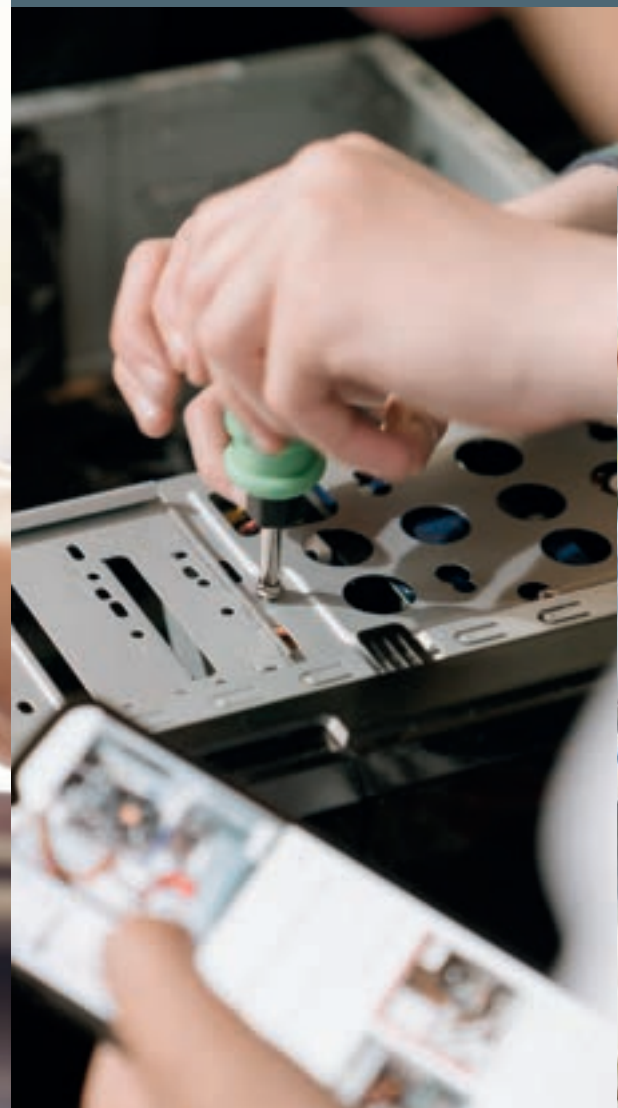
## I.T. Levels 1

NEW FOR SEPTEMBER 2024

Our I.T. course is built to provide learners with a wealth of technology and computing skills. Ideal for a world that is becoming more and more I.T. focused. Explore Microsoft Office 365, troubleshooting and digital creation skills.

## Pathways

Level 2 I.T.  
Apprenticeship







## Introduction to Occupational Studies for the Workplace Entry Level 3 or Level 1

This course is designed to help you prepare to move on to a vocational course by giving you the opportunity to explore the occupational area of your choice such as childcare, motor vehicle, business, and catering among others. You will also have the opportunity to engage with lots of hands-on activities including crafts, gardening, and taking part in social/community projects.

## Pathways

Vocational course of your choice





## Motor Vehicle Level 1

### Qualification:

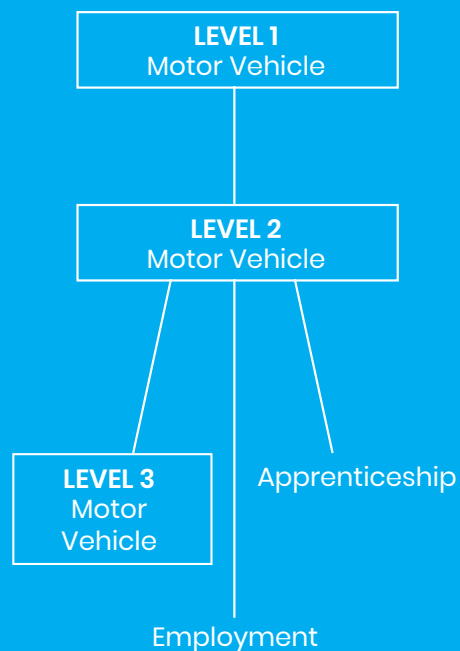
Level 1 in Motor Vehicle Studies

If you want to drive your future forward then study motor vehicle with City College Peterborough. If you are passionate about anything mechanical with a can-do attitude, we want to hear from you. Whilst studying your course you will gain confidence, communication skills and team building in both practical and theory lessons.



## Pathways

Level 2 Motor Vehicle course  
Apprenticeship







## Skills for Independence (SFI) Courses for Learners with Learning Difficulties and Disabilities

SFI is for young adults with severe and complex needs. On SFI, you will be supported to develop your independence, confidence and communication skills in lessons that are fun and tailored to your needs. SFI will teach you basic life skills such as cooking, cleaning, washing, ironing and much, much more!



You will also take part in regular trips and activities within the community including sailing, boccia, animal care courses, hand cycling and lots of other fun activities. Maths and English are embedded into all lessons, with the potential to take part in group or individual work experience if suitable.

Alongside the potential for work experience, our college staff may also be able to support you with finding and sourcing day opportunities and other provisions on your non college days.

Please speak to us to find out more. There may also be an opportunity to take part in a residential to help further develop your independence skills in real life situations.

The residential trip will take place within the UK and previous destinations have included Skegness, Great Yarmouth and Heacham. The week always proves fun and is enjoyed by all. Our staff provide personal care and can meet other support needs as outlined in the EHCP as well as communicating using Makaton and PECS. We have a fully accessible building complete with flat, garden and two new sensory rooms with SEN wellbeing on site to provide full, holistic support. In SFI, we help you develop the skills needed for your future and we can't wait to be a part of your next adventure.



## Learner story

Megan Smith: I came to SFI two years ago and I have had lots of fun. My favourite things that we do at college are art, cooking and going out on trips. My teachers and TAs are really nice and have helped me with my writing, confidence and independence. When I first came to college, I couldn't write very well and was quite quiet and shy. I was also a little bit worried to do things by myself. College have helped me to be more confident and do lots of things on my own. I can make hot drinks without any help and am very good at having conversations, like ordering food in a café. My writing has also got better and I can follow difficult instructions from my tutors and TAs, e.g. cleaning the classroom, peeling vegetables and cooking lots of things. College have also helped me to find places at Day Opportunities so I have five days of activities during the week and I really like it. Thank you college for helping me to be ready for my next adventure.

## Pathways

SFI: depends on learner needs and progress made. Two pathways available and SENCo will support with pathway finding.

Pathway 1: SFI – Step Up – vocational course – day opportunities / volunteering / employment – day opportunities / volunteering / employment

Pathway 2: SFI – day opportunities / volunteering / employment





## Sport Level 1

NEW FOR SEPTEMBER 2024

This qualification aims to help support the learner's personal development through acquiring skills and knowledge in sport, exercise and fitness. The qualification also allows learners to gain personal transferable skills that can be applied to the workplace or further study.

## Pathways

Level 2 Sport  
Personal Trainer  
Employment





## Step Up (Skills for Education and Further Learning) Entry Level 1 – Entry Level 3

Step Up is for learners with moderate learning disabilities. This fun, practical and interactive course provides a pathway into further learning, volunteering and day opportunities and helps to develop your independence, social skills, confidence and general life skills. Topics covered include arts and crafts, cooking, first aid, travel training, personal safety, washing, ironing and cleaning.

You will also take part in regular enrichment activities within the community including boccia, sailing, swimming, hand cycling and much, much more! The Step Up course also includes stand-alone maths and English lessons including tutorials, with opportunities to do work experience if suitable.



Alongside the potential for work experience, our college staff may also be able to support you with finding and sourcing day opportunities and other provisions on your non college days. Please speak to us to find out more. There may also be an opportunity to take part in a residential trip to help further develop your independence

skills in real life situations. The residential will take place within the UK and previous trip destinations have included Skegness, Great Yarmouth and Heacham. The week always proves fun and is enjoyed by all.

Our staff provide personal care and can meet other support needs as outlined in the EHCP as well as communication needs through the use of Makaton, PECS and other methods. We have a fully accessible building complete with flat, garden and two new sensory rooms with SEN wellbeing on site to provide full, holistic support. If you are ready for your next adventure and want to continue developing your skills whilst having fun, then Step Up is the course for you!



## Learner story

Kirsty Waring: I started college on the Skills for Independence course before I joined Step Up for two years. I have enjoyed college because we do fun and good activities and I have learnt lots. College have helped me to be more independent and feel more confident. I can make hot drinks, travel on the bus, cook food and write. My favourite things to do at college are cooking, colouring, arts and going on trips. My teachers and TAs are helpful and friendly and are always here to help with anything I need. College is really great fun and I feel ready for my next steps because of all the help I have had!



## Pathways

Depends on learner needs and progress made and SENCo will support with pathway finding.

Step Up – vocational course – day opportunities / volunteering / employment





## Support Educate Autism (S.E.A.)

The S.E.A. course is for learners on the autistic spectrum. It focuses on building learners' confidence, social skills, communication, and life skills through empowering your individual autism. The course enables learners to grow and gain skills to become more independent and aims to improve their social and communication skills, making them more confident and capable of integrating within their communities. S.E.A. also focuses on day trips, which are implemented to help learners better understand their local community by accessing public transport and improve their social skills. English and Maths is also embedded into the S.E.A. curriculum to ensure that learners gain basic numeracy and literacy capabilities. S.E.A. also covers the next steps for our learners and supports them with gaining skills in preparation for adulthood through tailored and supportive transitions. Our S.E.A. staff are here to help you with all aspects of learning and holistic development so in this next step, you will have a year full of fun and challenges – come and joins us!



## Learner story

I started S.E.A. in October 2022 and at first I was very nervous and anxious about being in the course. However, that anxiety lessened as all the staff trustworthy. The staff of SEA are incredibly caring, supportive, kind, funny and most importantly they're all amazing and wonderful people, that will consistently help you along the way and all of their hard work is always appreciated. I thank them all for making me feel safe, especially Ella she is funny. MG age: 17.



## Pathways

Vocational course of your choice  
Occupational Studies course





## Supported Internships

If you are aged 16-24 and have a statement of special educational need or an Educational Health and Care Plan (EHCP) then our Supported Internship is designed to prepare you for a range of work opportunities. Our supportive teachers and job coaches will help you develop your confidence, independence, employability, and work skills.

Apply today and start your journey into an exciting career.

## Learner story

My name is Wiktoria, I started at JMC feeling very shy, nervous and had little confidence in myself. I was scared about working because I had no work experience. After this year I am very happy, as I have finished five months work experience at the Dementia Resource Centre. I am now working at the Museum coffee shop. This course has helped me build my confidence and learn skills for the work I like doing. Veejay is a kind, funny teacher she has really boosted my confidence and has helped me every step to feel comfortable at work. I will be sad to leave my lovely group, but I have really enjoyed and learned a lot. Wiktoria has now moved on to Peterborough Museum coffee shop and is working as a coffee shop assistant.



## Pathways

Employment  
Apprenticeship

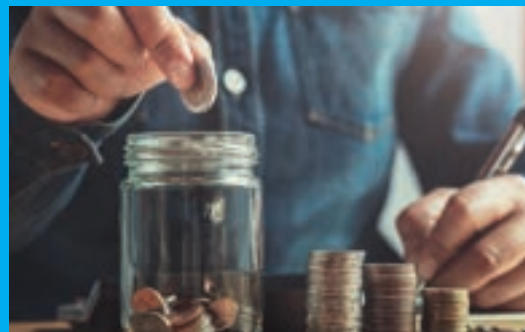






## Functional Skills Maths

City College Peterborough offers a great fun way to learn maths that you can use in your everyday life. Whatever barriers you have with maths, we will work with you to help break them down so that maths becomes an enjoyable skill used in everyday situations.





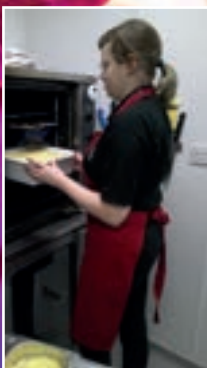
# Some of our Facilities



# Work Placement Study Programme

Allows learners to engage with local employers to see what working is like in “real working conditions” and to develop their employability skills and abilities as an employee.

With full support provided by our team, work experience breaks down barriers to training and supports young people who may have a learning disability and helps to develop a diverse workforce.



## What is a Work Experience?

- A partnership between an employer and City College Peterborough, supporting people aged 16–24 who may have a learning disability with work skills.
- A hands-on pathway to include employability skills and workplace opportunities.
- A training programme where both the employer and learner are fully supported by City College Peterborough to ensure a positive experience for all.
- Provides an unpaid trainee with experience in an organisation matched to their skills and aspirations.

**Contact us today to find out more:**  
**[careers@citycollegepeterborough.ac.uk](mailto:careers@citycollegepeterborough.ac.uk)**



# Enrichment Study Programme

Enrichment offers learners the chance to explore topics outside of their vocational timetable to help discover new interests and learn new things about themselves. Enrichment clubs are purely for selfdevelopment and fun and we do not offer qualifications alongside them, but they can support learners in expanding social circles and putting life skills into practice outside of the classroom. Enrichment clubs cover a range of different interests and make a perfect supplement for free time in a young person's timetable.



**Contact us today to find out more:**  
[sprecruitment@citycollegepeterborough.ac.uk](mailto:sprecruitment@citycollegepeterborough.ac.uk)



# Our Social Media



John Mansfield Campus



City College  
Peterborough  
*Working together, learning together*



## Follow us here ...



@JohnMansfieldCampusCCP



@citycollegepeterborough



@citycollegepeterborough



@CCPboro

## Where to find us ...



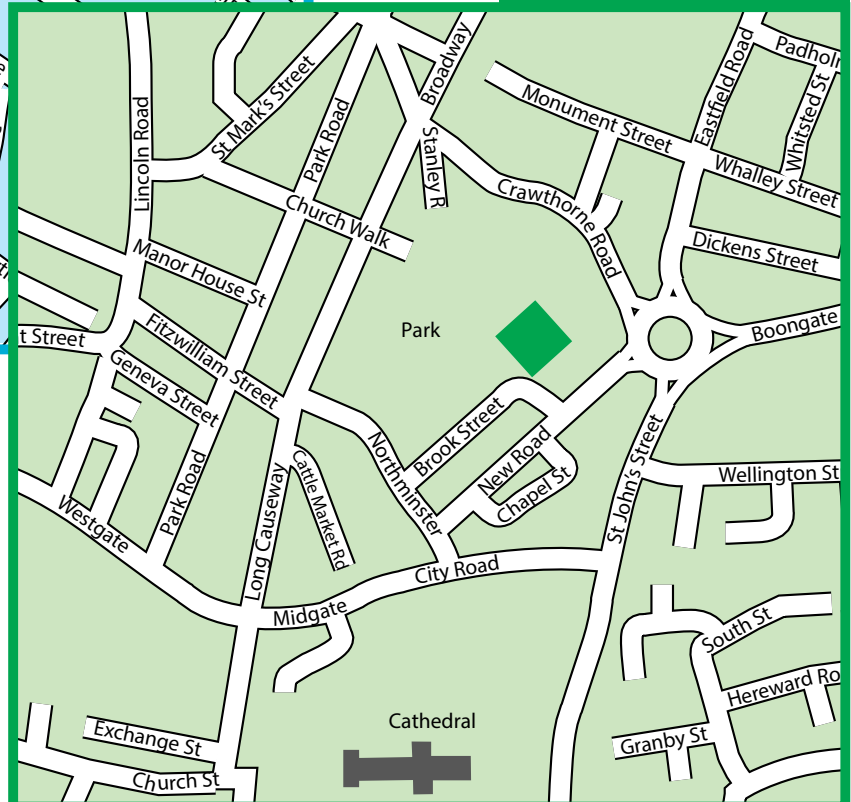
**City College  
Peterborough**

*Working together, learning together*



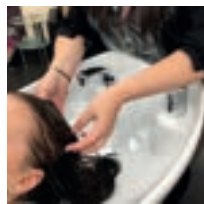
**John Mansfield  
Campus,  
Western Avenue,  
Dogsthorpe,  
Peterborough  
PE1 4HX**

**City College  
Peterborough,  
Brook Street,  
Peterborough  
PE1 1TU**





## Study Skills Work Experience Functional Skills



Contact us on:

**Tel: 01733 761361**

[sprecruitment@citycollegepeterborough.ac.uk](mailto:sprecruitment@citycollegepeterborough.ac.uk)



**City College  
Peterborough**  
*Working together, learning together*  
Jean Hunt Building



**City College  
Peterborough**  
*Working together, learning together*  
John Mansfield Campus



[www.citycollegepeterborough.ac.uk](http://www.citycollegepeterborough.ac.uk)